

A stylized map of Australia in a light green color, centered in the upper half of the page. The map is surrounded by a thick yellow outline. The background of the entire page is black with diagonal yellow and black stripes running from the bottom left to the top right.

ACE Rental

Job's Done!

1300 ACE RENT
www.acerental.com.au

EQUIPMENT CATALOGUE



ACE Rental is a service-oriented equipment hire company who can provide skilled operators for its wide range of machinery.

ACE Rental's core business consists of both Operated Machinery Hire and Self Operated Equipment Rental. Our late model, low hour fleet boasts over 200 machines and covers a wide range of civil construction and road maintenance uses. Our customers work in a wide variety of industries including road construction, civil construction, road maintenance, recycling and pipelines. ACE Rental's systems are designed to give you 100% service all the time. This service is backed up by our commitment to continuous improvement.

ACE Rental places a very high focus on occupational health and safety, the plant it provides and the people supporting it place top priority on ensuring the plant can be operated safely as well as reliably. At each handover of plant to our customers, ACE Rental carries out a safety handover with the person receiving the plant in the interests of a safe job and a successful rental.

ACE Rental has committed itself to training its team so that the skill and attention that is needed to provide you with maximum up-time on your job is supported by keen, knowledgeable and responsive people. Through its stringent plant check in procedure each item of equipment is meticulously checked and maintained between each hire to ensure the equipment you order arrives on site ready for work.

ACE Rental's fleet size, its range of plant, its annual plant purchasing and fleet upgrade programs are all focused on giving you state of the art equipment equipped with the latest technology. We have also aligned ourselves with Sitech Construction Systems so we can supply the latest Trimble hardware with the latest software to ensure accuracy on your earthworks projects.

ACE Rental has also established a range of the latest traffic management equipment including solar traffic lights and variable message signs both amber and 5 colour. Our signs encompass the latest cloud software and can be both located and controlled from anywhere in the world. Our clients can also be invited to share our software and control rented signs themselves if preferred.

ACE Rental is committed to continually working with our clients to remain the premier hire company in Queensland.



Equipment can be delivered to site or collected from our Yatala depot



Fast service when you call, available 24/7



Machinery available for dry hire



Equipment delivered on time, everytime

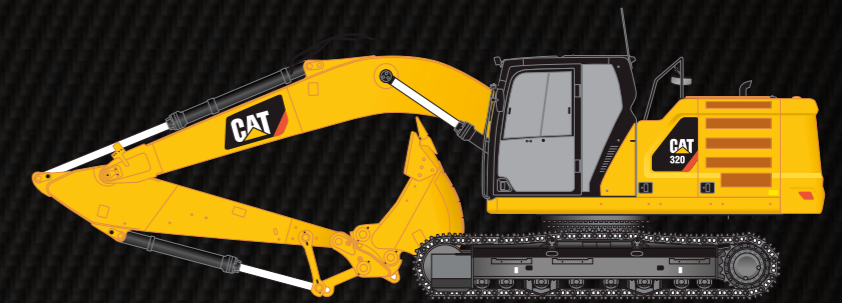
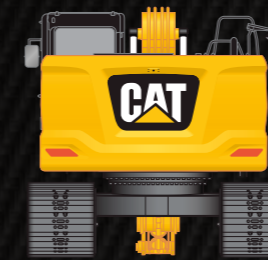
So for your next project, whether it be large or small, be sure to give ACE Rental a call for a solution to all of your equipment needs.

**DECADES OF EXPERIENCE,
MEANS WE DO IT RIGHT!**



Excavators & Buckets

MODEL	BUCKETS (mm)									ATTACHMENTS			
	300	450	600	900	1,000	1,350	1,500	1,750	2,200	BATTER	TILT BUCKET	PIN WHEEL	RIPPER
HITACHI ZX48	X	X	X							X			X
HITACHI ZX55	X	X	X							X			X
HITACHI ZX65	X	X	X							X			X
HITACHI ZX85	X	X	X							X		X	X
HITACHI ZX135		X	X		X					X	X	X	X
KOBELCO SK135		X	X		X					X		X	X
HITACHI 220 HYBRID			X		X		X			X		X	X
CAT320			X		X		X			X		X	X
CAT 323			X		X		X			X		X	X
HITACHI ZX290			X		X		X			X	X	X	X
CAT330			X		X		X				X	X	X
CAT330F			X		X		X	X			X	X	X
KOBELCO SK350				X	X		X	X			X	X	X
HITACHI ZX360				X	X		X	X			X	X	X
CAT336				X	X		X	X			X	X	X
HITACHI ZX490									X	X			X



Machine Specifications

MODEL	S.W.L	DIMENSIONS		TRIMBLE GPS		HITCH	
	S.W.L (kgs)	WEIGHT (kgs)	WIDTH (mm)	TRIMBLE READY	FULL 3D	HYD	HYD TILT
HITACHI ZX48	330	5000	1,960				X
HITACHI ZX55	410	5,2500	2,000				X
HITACHI ZX65	480	6,500	2,000				X
HITACHI ZX85	580	8,500	2,200				X
HITACHI ZX135	1,290	14,000	2,690	X			X
KOBELCO SK135	815	14,000	2,490	X			X
HITACHI 220 HYBRID	2,150	20,000	2,960	X			X
CATERPILLAR 320 NEXT GEN	2,150	23,000	2,980	X	X	X	X
CATERPILLAR 323 NEXT GEN	2,250	25,000	3,170	X	X	X	X
HITACHI ZX290	2,940	29,000	3,390	X		X	
CATERPILLAR 330 NEXT GEN	3,450	30,000	3,390	X	X	X	
CATERPILLAR 330F	3,450	33,000	3,290	X		X	
KOBELCO SK350	4,210	36,000	3,190	X		X	
HITACHI ZX360	3,310	36,000	3,390	X		X	
CATERPILLAR 336 NEXT GEN	4,200	36,000	3,440	X	X	X	X
HITACHI ZX490	4,500	49,000	3,820	X		X	

GRADER



Hyd Hammer

MODEL	HYD HAMMER	MODEL	HYD HAMMER	MODEL	HYD HAMMER
CAT 323	EVERDIGM EB20	CAT336	EVERDIGM EB30	HITACHI ZX135	SOOSAN
HITACHI ZX290	EVERDIGM EB25	HITACHI ZX490	EVERDIGM EB40	KOBELCO SK135	SOOSAN
CAT330	EVERDIGM EB25	HITACHI ZX48	BME	HITACHI 220 HYBRID	EVERDIGM EB20
CAT330F	EVERDIGM EB25	HITACHI ZX55	BME	CAT320	EVERDIGM EB20
KOBELCO SK350	EVERDIGM EB30	HITACHI ZX65	BME		
HITACHI ZX360	EVERDIGM EB30	HITACHI ZX85	GB BREAKER		

Graders

MODEL	LENGTH (m)	WIDTH (m)	WEIGHT (kg)	REAR RIPPER	12" BLADE	14" BLADE	TRIMBLE READY
CATERPILLAR 12M	8.5	2.5	21,000	X	X		X
CATERPILLAR 12M	8.5	2.6	21,000	X		X	X
CATERPILLAR 140M	8.5	2.6	24,000	X		X	X
JOHN DEERE 670GP	8.84	2.6	19,500	X		X	X
JOHN DEERE 770GP	8.84	2.6	20,500	X		X	X



LOADER



Backhoe

MODEL	S.W.L (FEL)	S.W.L (HOE)	WEIGHT (kgs)	DIMENSIONS		
	S.W.L (kgs)	S.W.L (kgs)		WIDTH (m)	LENGTH (m)	HEIGHT (m)
JCB 3CX 4WD CLASSIC	1,000	718	8,500	2.5	7.5	4.2
JCB 3CX 4WD CLASSIC	1,000	718	8,500	2.5	7.5	4.2

Loaders

MODEL	S.W.L (kg) FEL	WEIGHT (kgs)	WIDTH (m)	LENGTH (m)	HEIGHT (m)
JCB 426 HT	5,000	13,500	2.6	7.2	3.5
BOBCAT S450	1,179	2,400	1.6	3.2	2
CASE TR270	1,227	3,800	1.7	3.3	2
CASE TR270	1,227	3,800	1.7	3.3	3

Attachments

MODEL	BUCKETS (mm)				ACCESSORIES			
	300	450	600	TILT BUCKET	2.6 (m) F.E.L	1 (m) F.E.L	FORKS	HITCH
JCB 3CX 4WD CLASSIC	X	X	X	X			X	X
JCB 3CX 4WD CLASSIC	X	X	X	X			X	X
JCB 426 HT					X		X	X
BOBCAT S450						X	X	X
CASE TR270						X	X	X
CASE TR270						X	X	X

ROLLERS



Rollers

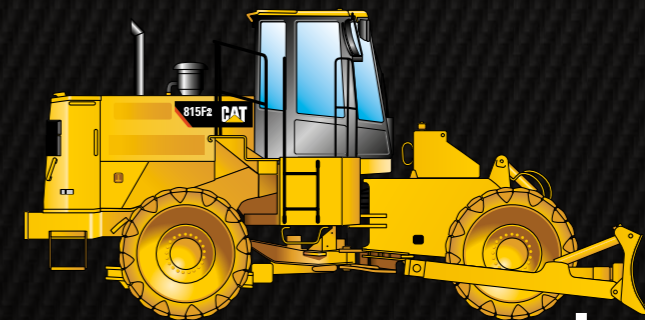
MODEL	WEIGHT (kgs)	LENGTH (mm)	WIDTH (mm)	DRUM WIDTH	PUSH BLADE	PAD FOOT	SMOOTH DRUM	TWIN DRUM	MULTY TIRE
DYNAPAC TRENCH COMPACTOR	1,500	1,900	1,000	850		X			
DYNAPAC CC900	1,600	2,100	970	900				X	
DYNAPAC CC1200	3,000	2,400	1,400	1,200				X	
DYNAPAC CC1300	4,000	2,800	1,450	1,300				X	
DYNAPAC CC2200	8,000	4,500	1,620	1,500				X	
AMMANN	3,500	3,500	1,300	1,300	X	X			
DYNAPAC CA1300PDB	4,500	4,300	1,500	1,370	X	X			
DYNAPAC CA1500	7,000	5,300	1,870	1,676		X			
DYNAPAC CA1500	7,000	5,300	1,870	1,676			X		
DYNAPAC CA3500	13,000	6,000	2,310	2,130		X			
DYNAPAC CA3500	13,000	6,000	2,310	2,130		X			
DYNAPAC CA3500	13,000	6,000	2,310	2,130			X		
HAMM HD90VVO	9,000	4,600	1,810	1,680				X	
HAMM HD12VT	3,000	2,530	1,220	1,200			X		X
HAMM HD14VT	4,000	2,900	1,500	1,380			X		X
SAKAI GW750-2	9,000	4,540	2,200	2,200					X

COMPACTORS



Compactors

MODEL	WEIGHT (kgs)	LENGTH (mm)	WIDTH (mm)	DRUM WIDTH (mm)	PUSH BLADE	PAD FOOT	TRIMBLE READY
CATERPILLAR 815F2 COMPACTOR	1,810	6,220	3,600	3,200	X	X	X
CATERPILLAR 825G COMPACTOR	3,200	8,450	3,650	1,125	X	X	X





Tipper Trucks

MAKE	MODEL	CAPACITY (T)	LICENCE	TARP	AUTO	MAN	TARE	GVM	GCM
MITSUBISHI	FUSO	3	C			X	3,120	4,500	8,000
MITSUBISHI	FUSO	3	C		X		3,120	4,500	8,000
MITSUBISHI	FUSO	3	C		X		3,120	4,500	8,000
MITSUBISHI	FUSO	3	C		X		3,120	4,500	8,000
MITSUBISHI	FUSO	3	C		X		3,120	4,500	8,000
MITSUBISHI	FUSO	3	C		X		3,120	4500	8,000
MITSUBISHI	FUSO	3	C		X		3,120	4,500	8,000
MITSUBISHI	FUSO	3	C		X		3,120	4,500	8,000
ISUZU	FVZ1400	10	HR	X	X		9,320	24,000	36,000
ISUZU	FVY1400	10	HR	X		X	9,060	24,000	36,000
HINO	RANGER PRO 14	10	HR	X		X	6,920	26,000	33,000

Water Trucks

MAKE	MODEL	CAPACITY (L)	LICENCE	CANNON	AUTO	MAN	TARE	GVM	GCM
ISUZU	FVZ	13,000	HC	X	X		9,060	24,000	36,000
MITSUBISHI	FUSO FIGHTER	13,000	HC			X	8,920	23,500	32,000
HINO	HINO FG SERIES	8,000	MR	X	X		9,980	16,000	32,000
HINO	HINO FG SERIES	8,000	MR	X	X		9,980	16,000	32,000
MITSUBISHI	FUSO FIGHTER	8,000	MR			X	4,900	16,000	25,000
MITSUBISHI	FUSO	3,000	C			X	3,120	4,500	8,000



Flocon Truck

MAKE	MODEL	CAPACITY (T)	LICENCE	TARP	AUTO	MAN	TARE	GVM	GCM
HINO	FD SERIES	5	MR	X		X	6,020	10,400	16,000





Light Towers

MAKE	MODEL	KVA	WEIGHT (kg)	LENGTH (mm)	WIDTH (mm)	RAISED HEIGHT (m)
DOOSAN	LSV-9	6	1,167	3,135	1,332	9
JCB	LT9	5	911	2,330	1,273	9
ATLAS COPCO	HIGHLIGHT H5+	5.5	1,050	2,300	1,280	8
PR POWER	PR-ECO LED	1	970	2,540	1,380	8.5

Traffic Lights

MAKE	MODEL	LED	REMOTE	SENSOR	RAISED HEIGHT (mm)
GIGA	PTL2	X	X	X	3,485
GIGA	PTL2	X	X	X	3,485
GIGA	PTL2	X	X	X	3,485



Variable Message Signs

MAKE	MODEL	SIZE	5 COLOUR	AMBER	RAISED HEIGHT (m)	WIDTH (mm)	LENGTH (mm)
GIGA	1306P	B		X	3,620	1,710	3,100
GIGA	1306P	B		X	3,620	1,710	3,100
GIGA	1306P	B		X	3,620	1,710	3,100
GIGA	1306P	B		X	3,620	1,710	3,100
LDC	VMS1B	B		X	3,800	1,710	3,100
LDC	VMS1B	B		X	3,800	1,710	3,100
LDC	VMS1B	B		X	3,800	1,710	3,100
LDC	VMS1B	B		X	3,800	1,710	3,100
LDC	VMS1C	C	X		3,800	1,710	3,100
LDC	VMS1C	C	X		3,800	1,710	3,100
LDC	VMS1C	C	X		3,800	1,710	3,100
LDC	VMS1C	C	X		3,800	1,710	3,100
LDC	VMS1C	C	X		3,800	1,710	3,100
LDC	VMS1C	C	X		3,800	1,710	3,100
LDC	VMS1C	C	X		3,800	1,710	3,100
LDC	VMS1C	C	X		3,800	1,710	3,100
LDC	VMS1C	C	X		3,800	1,710	3,100
LDC	VMS1C	C		X	3,800	1,710	3,100
LDC	VMS1C	C		X	3,800	1,710	3,100
LDC	VMS1C	C		X	3,800	1,710	3,100
LDC	VMS1C	C		X	3,800	1,710	3,100



Generators

MAKE	MODEL	KVA	WIDTH (mm)	LENGTH (mm)	HEIGHT (mm)
GENELIGHT	GMS30KS	30	1,040	2,180	1,450
ATLAS COPCO	QAS20	20	870	1,200	1,200



Forklifts

MAKE	MODEL	CAPACITY (T)	CONTAINER MAST	SIDE SHIFT	RAISED HEIGHT (m)	DIESEL	GAS
TCM	FG25	2.5	X	X	3.4		X
CLARK	C25D	2.5	X	X	4.8	X	
CLARK	GTS25	2.5	X	X	3.2		X
CLARK	GTS25	2.5	X	X	3.2	X	
CLARK	GTS30	3	X	X	3.2	X	



Trimble Gear

DESCRIPTION	TO SUIT	MAKE
SPS730 TOTAL STATION	GRADER	TRIMBLE
SPS930 TOTAL STATION	GRADER	TRIMBLE
SPS930 TOTAL STATION	GRADER	TRIMBLE
EM400 ELECTRIC MAST	GRADER	TRIMBLE
MS992 RECEIVER	GRADER	TRIMBLE
MS995 RECEIVER	EXCAVATOR	TRIMBLE
MS972 RECEIVER	EXCAVATOR	TRIMBLE
MS975 RECEIVER	EXCAVATOR	TRIMBLE
MT900 PRISMS	GRADER	TRIMBLE
10" EARTHWORKS TOUCH SCREENS	EXCAVATOR	TRIMBLE
3G MODEMS	ALL MACHINE	TRIMBLE
4G MODEMS	ALL MACHINE	TRIMBLE
CB460 SCREEN	EXCAVATOR	TRIMBLE
CB460 SCREEN	GRADER	TRIMBLE
CB460 SCREEN	ALL MACHINE	TRIMBLE
SNR RADIO	ALL MACHINE	TRIMBLE
SNR DUAL BAND RADIO	GRADER	TRIMBLE
TDL RADIO	ALL MACHINE	TRIMBLE
ROVER	GRADER	TRIMBLE

ACE Repair – Field Service

With over 40 years of experience in the Maintenance and Repair of Heavy Earthmoving Equipment and Trucks, our expertly trained technicians are available 24/7. No job is too big or too small.

Our fully equipped service vehicle is equipped with 120 CFM air on demand compressor and a 1 2KVA generator capable of running our on board 250 amp mig welder. Our service vehicle is also equipped with a 1.5T Hiab crane which is instrumental in manoeuvring heavy components on site.

Service work can be accomplished by introducing our Air Operated Service Trailer. This couples to our Service vehicle allowing us to utilise suction drain and pressure feed facilities to reduce man handling of both fresh and waste oils on site.

Our service Vehicle is also equipped with colour printer and laptop computer so that Safe Work Method Statements can be produced and approved prior to any service work commencing on site.

Our laptop computer has access to both Hitachi and CAT parts online. We are also equipped to carry out diagnostics on Caterpillar machines with the use of CAT ET software.

Services Include:

**HYDRAULIC REPAIRS • ROUTINE SERVICING • ENGINE REPAIRS • TRACK REPAIRS
AUTO ELECTRICAL REPAIRS • MECHANICAL REPAIRS • AIR CONDITIONING REPAIRS**





HITACHI

SAKAI

ISUZU



KOBELCO

CAT

CASE



Contact Us

1300 ACE RENT
sales@acerental.com.au
Avatonbell Drive Yatala, QLD 4207
PO Box 619 Labrador, QLD 4215

/www.acerental.com.au/ /company/ace-rental